

PERKO®

Bill of Material

Item	Fig. No.	Description	Qty.
1		Drum Assembly Complete	1
12		Fork Assembly Complete	1
23	890#1	Reflector	1
27	891#1	Front Door with Glass Assembly	1
31	889#1	Front Glass	1
34		Anti-Halo Ring Assembly	1
19	908 #1	Rear Cover with Screws	1
59		Base Assembly Complete	1
48	910	Reflector Clips	4
49		Focus Device Ass. W/Socket & Stand See Note #1	1
47		Upper Vent Cover	1
51		Electrical Cord Assembly	1
57		Control Handle	1
53		Latch, Front Door	2
54		Hinge Assembly, Front Door	1
58		Fork Seal Bushing	1
56		Base Seal	1

SPECIFY FINISH WHEN ORDERING SPARE PARTS.

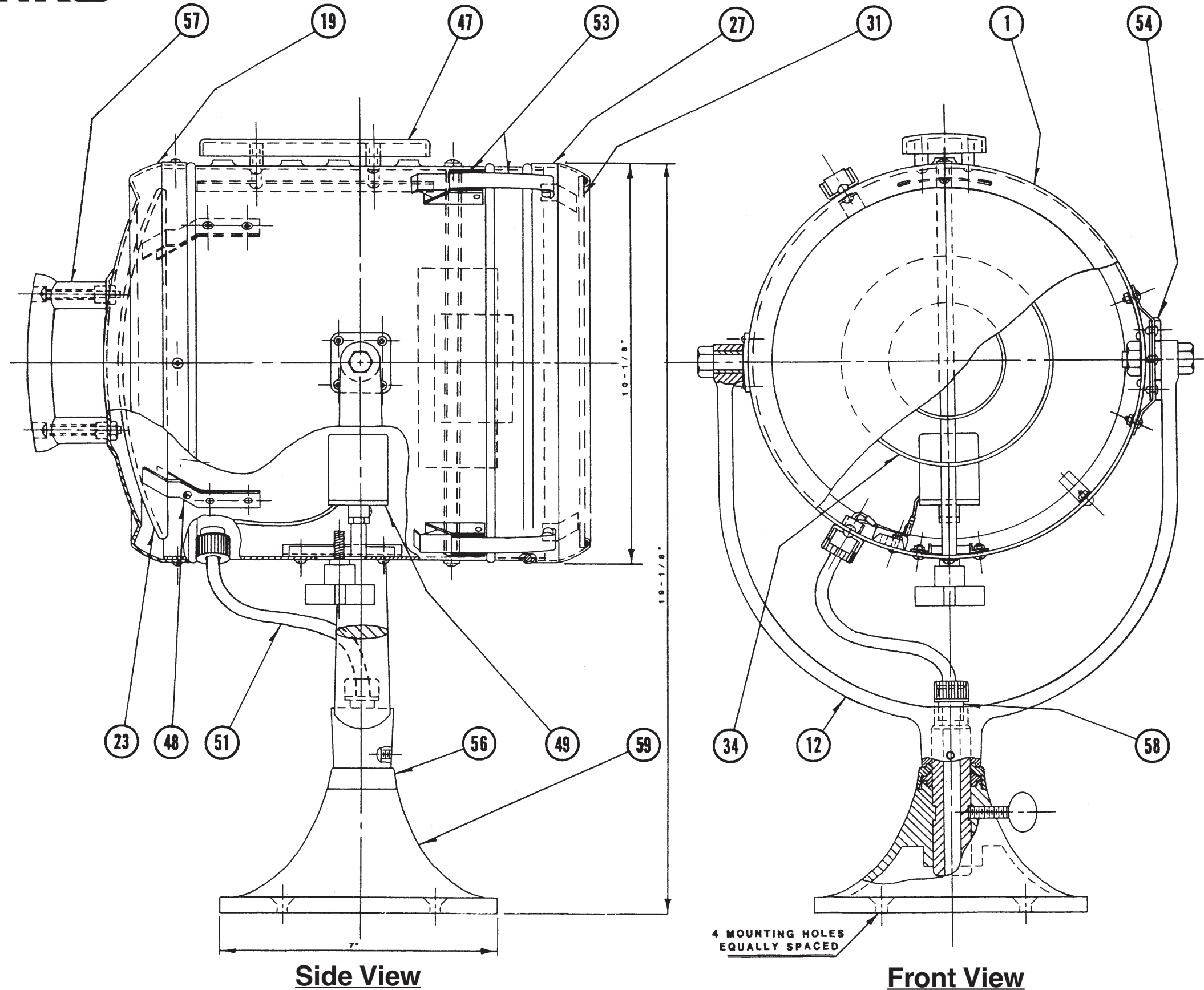
NOTE 1 ALL BULBS USING THE SAME SOCKET AND STAND FIG. NO. (LAST COLUMN BELOW) ARE FIELD INTERCHANGEABLE W/O MODIFICATION, OTHERWISE A CHANGE IN BULB TYPE MUST BE ACCOMPANIED BY A NEW CORRESPONDING SOCKET AND STAND.

NOTE 2 **INCLINATION** 90° **DECLINATION** 48°

NOTE 3 "J" DIMENSIONS
 883 OP1 19-1/8"
 883 MP1 27-1/2"
 883 HP1 44"

NOTE 4 SEARCHLIGHTS WITH "J" DIMENSIONS ABOVE THE STANDARD (19-1/8") UTILIZE AN 8" DIAMETER BASE (KEY NO. 59) INSTEAD OF STANDARD 7" BASE.

NOTE 5 SEARCHLIGHTS WITH SPECIAL PEDESTAL HEIGHTS AND/OR SPECIAL CONTROL LENGTHS CAN BE MADE TO ORDER. THE SPECIAL "J" DIMENSION AND/OR CONTROL LENGTH DIMENSION ("E" OR "F") MUST ACCOMPANY THE INQUIRY.



Bulb Fig. No.	Bulb Wattage	Bulb Voltage	Approximate Maximum E.C.P.	Horz. Beam Spread	Vert. Beam Spread	Life Hours	Lamp Code	Socket Type	Socket Fig. No.	Socket & Stand Fig. No.
816	100	12	1,168,000	1.7	1.4	50	FDT	2 Pin Pref.	899	875 #1
836	150	24	891,000	2.6	1.5	50	DZE/FDS	2 Pin Pref.	899	876 #1
817	200	32	571,000	2.6	1.7	200	G.E.-1945	2 Pin Pref.	899	878 #1
806	500	32	943,000	3.4	3.9	50	DLT	Med. Screw	894	872 #1
807	500	120	1,332,000	3.5	2.8	25	CZX	Med. Pref.	895	873 #1
844	500	120	1,260,000	3.1	3.4	500	BTL	Med. Pref.	895	873 #1
820	600	120	908,000	4.4	2.2	75	DYS	2 Pin Pref.	899	879 #1

PERKO®
 16490 N.W. 13th Avenue Miami, FL 33169-5707
 Date: 1-3-83 Drawn By: D. Beutler
 Scale: None Revised: 7-6-95

883-001 Searchlight

Bill of Material

Item	Fig. No.	Description	Qty.
2		Drum Assembly Complete	1
13		Fork Assembly Complete	1
20	0908002	Rear Cover with Screws	1
24	0890002	Reflector	1
28	0891002	Front Door with Glass Assembly	1
32	0889002	Front Glass	1
35		Anti-Halo Ring Assembly	1
45		Lower Vent Cover	1
47		Upper Vent Cover	1
48		Reflector Clips	4
49		Focus Device Assy. w/Socket & Stand. (See Note 1)	1
51		Electrical Cord Assembly	1
53		Latch, Front Door	2
54		Hinge Assembly, Front Door	1
58		Fork Seal Bushing	1
56		Base Seal	1
59		Base Assembly Complete	1
57		Control Handles	2

Specify finish when ordering spare parts.
Note 1 All Bulbs using the same socket and stand Fig. No. (last column below) are field interchangeable w/o modification, otherwise a change in bulb type must be accompanied by a new corresponding socket and stand.

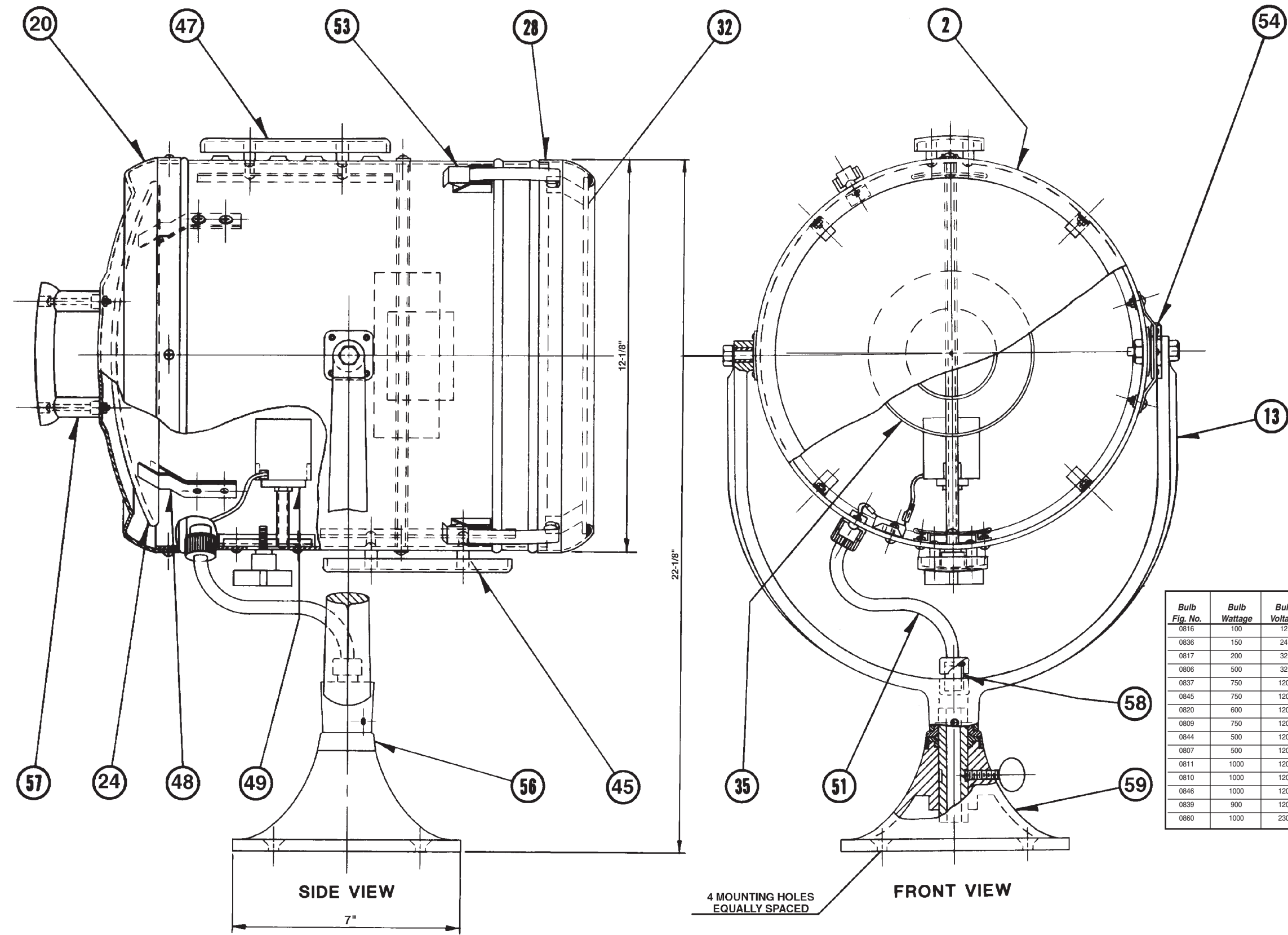
Note 2 **Inclination** **Declination**
 90° 49°

Note 3 "J" Dimensions
 0883002 22-1/8"
 0883MO2 29-1/2"
 0883HO2 46"

Note 4 Searchlights with "J" dimensions above the standard (22-1/8") utilize an 8" diameter base (key no. 59) instead of standard 7" base.

Note 5 Searchlights with special pedestal heights and/or special control lengths can be made to order. The special "J" dimension and/or control length dimension ("E") must accompany the inquiry.

Bulb Fig. No.	Bulb Wattage	Bulb Voltage	Approximate Maximum B.C.P.	Horz. Beam Spread	Vert. Beam Spread	* Life Hours	Lamp Code	Socket Type	Socket Fig. No.	Socket & Stand Fig. No.
0816	100	12	1,617,000	1.5	1.2	50	FDT	2 Pin Pref.	0899	0875002
0836	150	24	1,349,000	2.2	1.5	50	DZE/FDS	2 Pin Pref.	0899	0876002
0817	200	32	865,000	2.4	1.6	200	G.E.-1945	2 Pin Pref.	0899	0878002
0806	500	32	1,496,000	3.4	3.5	50	DLT	Med. Screw	0894	0872002
0837	750	120	977,000	4.1	3.7	200	DDY	Med. Pref.	0895	0873002
0845	750	120	1,185,000	3.7	5.2	200	BTP	Med. Pref.	0895	0873002
0820	600	120	1,410,000	4.3	1.9	75	DYS	2 Pin Pref.	0899	0879002
0809	750	120	1,747,000	3.6	3.4	25	DPJ	Med. Pref.	0895	0873002
0844	500	120	1,641,000	3.2	3.4	500	BTL	Med. Pref.	0895	0873002
0807	500	120	1,799,000	3.3	3.1	25	CZX	Med. Pref.	0895	0873002
0811	1000	120	1,816,000	4.0	4.9	25	DRW	Mog. Screw	0897	0874002
0810	1000	120	1,894,000	4.0	3.8	25	DRS	Med. Pref.	0895	0873002
0846	1000	120	1,911,000	3.9	5.0	200	BTR	Med. Pref.	0895	0873002
0839	900	120	2,482,000	4.5	5.5	75	BVA	2 Pin Pref.	0866	0880002
0860	1000	230	865,000	6.9	5.9	950	FKD	Med. Pref.	0895	0873002



PERKO®

16490 N.W. 13th Avenue Miami, FL 33169-5707

Date: 1-26-83 Drawn By: D. Beutler

Scale: None Revised: 12/1/08

Fig. 0883 #2 Searchlight Head Assembly

Bill of Material

Item	Fig. No.	Description	Qty.
3		Drum Assembly Complete	1
14		Fork Assembly Complete	1
21	908-003*	Rear Cover with Screws	1
25	890-003	Reflector	1
29	891-003*	Front Door with Glass Assembly	1
33	889-003	Front Glass	1
36		Anti-Halo Ring Assembly	1
46		Lower Vent Cover	1
47		Upper Vent Cover	1
48	910	Reflector Clips	4
49		Focus Device Ass. W/Socket & Stand See Note #1	1
51		Electrical Cord Assembly	1
53	883-000-88B	Latch, Front Assembly	4
54		Hinge Assembly, Front Door	1
56		Base Seal	1
57		Control Handle	1
59		Base Assembly Complete	1

SPECIFY FINISH

NOTE 1 ALL BULBS USING THE SAME SOCKET AND STAND FIG. NO. (LAST COLUMN BELOW) ARE FIELD INTERCHANGEABLE W/O MODIFICATION, OTHERWISE A CHANGE IN BULB TYPE MUST BE ACCOMPANIED BY A NEW CORRESPONDING SOCKET AND STAND.

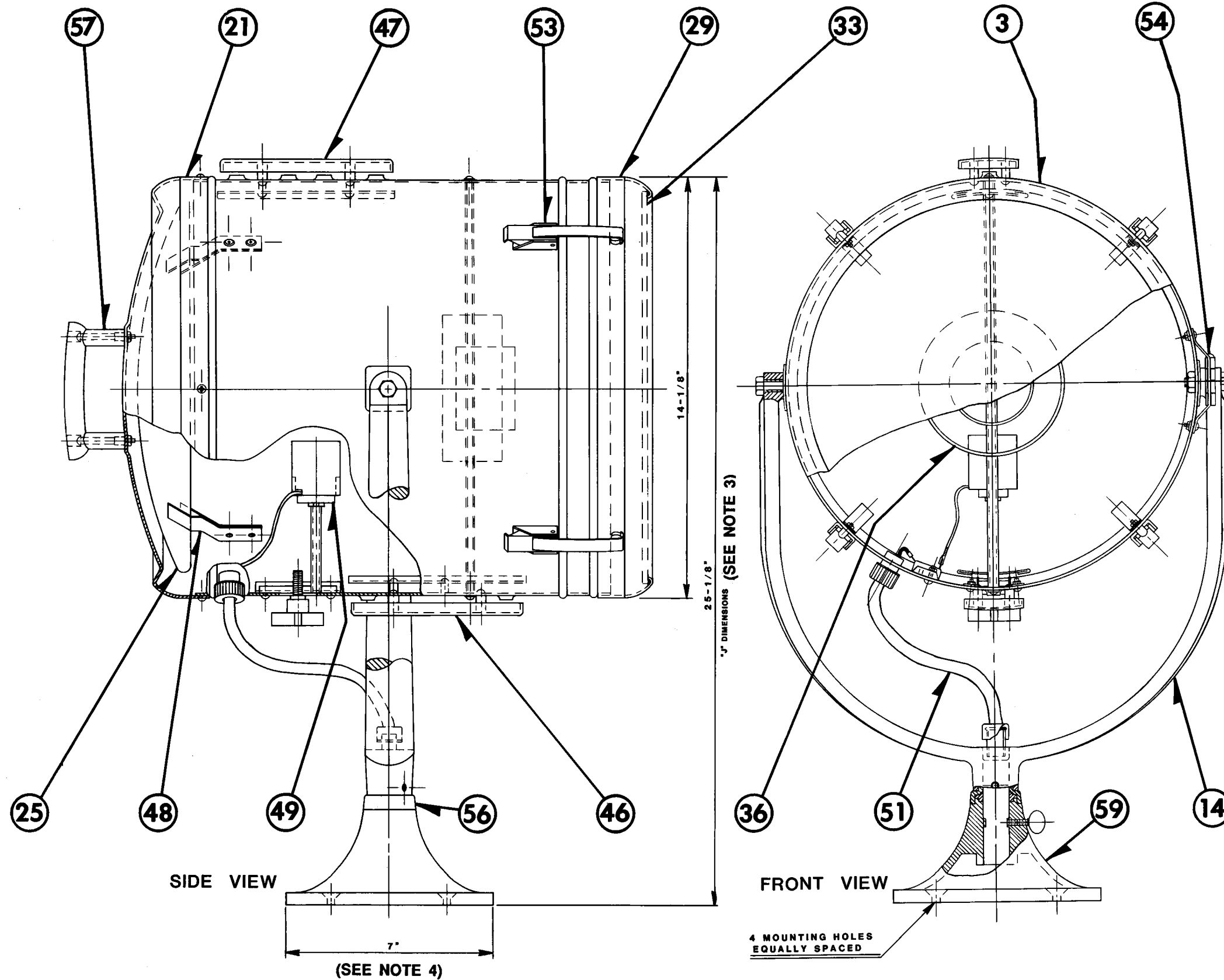
NOTE 2 **INCLINATION** 90° **DECLINATION** 50°

NOTE 3 "J" DIMENSIONS
 883 003 25-1/8"
 883 M03 31-1/2"
 883 H03 48"

SEARCHLIGHTS WITH SPECIAL PEDESTAL HEIGHTS CAN BE MADE TO ORDER. THE SPECIAL "J" DIMENSION MUST ACCOMPANY THE INQUIRY.

NOTE 4 SEARCHLIGHTS WITH "J" DIMENSIONS ABOVE THE STANDARD (25-1/8") UTILIZE AN 8" DIAMETER BASE (KEY NO. 59) INSTEAD OF STANDARD 7" BASE.

Bulb Fig. No.	Bulb Wattage	Bulb Voltage	Approx. Maximum B.C.P.	Horz. Beam Spread	Vert. Beam Spread	Life Hours	Lamp Code	Socket Type	Socket Fig. No.	Socket & Stand Fig. No.
816	100	12	1,617,000	1.5	1.2	50	FDT	2 Pin Pref.	899	875 #2
836	150	24	1,349,000	2.2	1.5	50	DZE/FDS	2 Pin Pref.	899	876 #2
817	200	32	865,000	2.4	1.6	200	G.E.-1945	2 Pin Pref.	899	878 #2
806	500	32	1,496,000	3.4	3.5	50	DLT	Med. Screw	894	872 #2
837	750	120	977,000	4.1	3.7	200	DDY	Med. Pref.	895	873 #2
845	750	120	1,185,000	3.7	5.2	200	BTP	Med. Pref.	895	873 #2
820	600	120	1,410,000	4.3	1.9	75	DYS	2 Pin Pref.	899	879 #2
809	750	120	1,792,000	3.6	3.4	25	DPJ	Med. Pref.	895	873 #2
844	500	120	1,641,000	3.2	3.4	500	BTL	Med. Pref.	895	873 #2
807	500	120	1,799,000	3.3	3.1	25	CZX	Med. Pref.	895	873 #2
811	1000	120	1,816,000	4.0	4.9	25	DRW	Mog. Screw	897	874 #2
810	1000	120	1,894,000	4.0	3.8	25	DRS	Med. Pref.	895	873 #2
846	1000	120	1,911,000	3.9	5.0	200	BTR	Med. Pref.	895	873 #2
839	900	120	2,482,000	4.5	5.5	75	BVA	2 Pin Pref.	866	880 #2
860	1000	230	865,000	6.9	5.9	950	FKD	Med. Pref.	895	873 #2



PERKO®

16490 N.W. 13th Avenue Miami, FL 33169-5707

Date: 3-3-83 Drawn By: D. Beutler

Scale: None Revised: 3-19-02

883-003 Solor-Ray® Deck Control Searchlight

PERKO CAT. NO. 883-000-99A SOLAR-RAY FRONT DOOR LATCH UPGRADE KIT

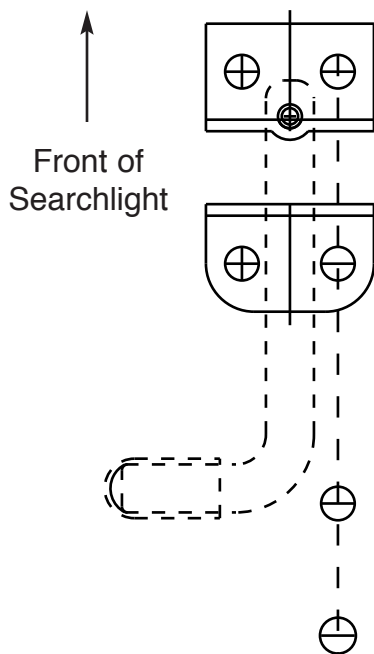
These instructions are provided with the “Latch Upgrade Kit” in order to facilitate the replacement of the old style “band” latches with the NEW Perko “bolt” latches. Included in this kit are:

- ✓ Template (attached to this instruction sheet).
- ✓ #10 drill bit.
- ✓ Latch assembly parts, consisting of:
 - Keeper bracket.
 - “L” handle with spring and attached base bracket.
- ✓ Mounting screws to fasten the new latch assembly.
- ✓ Extra screws to fill mounting holes remaining after removing the the old latch.

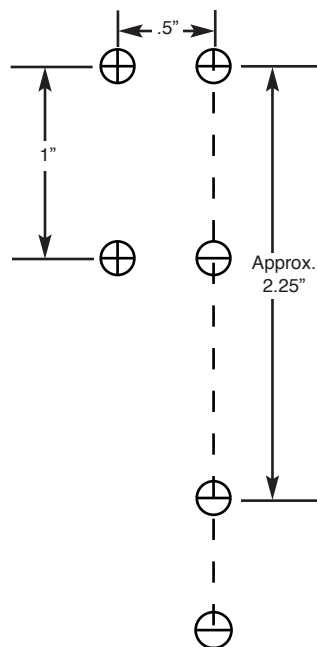
Procedure:

1. Remove old “band” latch.
2. Place template on searchlight drum (with front door closed), such the three existing holes in the drum line up with the indicated holes marked the template. This lines up the template.
3. Push one screw through the template and into the existing “Button” hole to hold the template in place. Align the template with the existing “Latch” holes, as closely as practical.
(Note: The latch hole positions are approximate).
4. Center punch the remaining holes on the template to prepare for drilling.
5. Remove the template, and drill mounting holes as indicated using the the #10 drill bit.
6. Attach the new “bolt” latch with 4 screws, nuts and lock washers.
7. Use remaining fasteners to fill unused open holes.

Assembly Layout



Assembly Layout



TEMPLATE

